



# CVK CVK

F u r n i t u r e P R O J E C T

## Minimal & Modern Hotel Project

As CVK Furniture, we flawlessly manage a process where dreams turn into drawings and drawings into production. Quality and originality are at the forefront in all our project-based productions.

**From Sketch to Reality, Just in Time.**

CVK Signature in Every Detail!



Full compliance with  
architectural projects,  
custom production...  
There is quality in every  
line, expertise in every  
detail.  
We shape the space  
according to the furniture,  
not the furniture according  
to the space.

## Dubai El Mohanna Tower

Light-toned natural marble was preferred for the floor covering. The reception desk was designed specifically for the project and completed with lacquer and brass details.

The linear LEDs on the ceiling line also support the orientation function of the area.

The reception area of El Mohanna Tower Hotel offers the first impression that greets the visitor with architectural integrity.

Furniture, material and lighting choices combine luxury hotel comfort with a warm welcoming feeling.







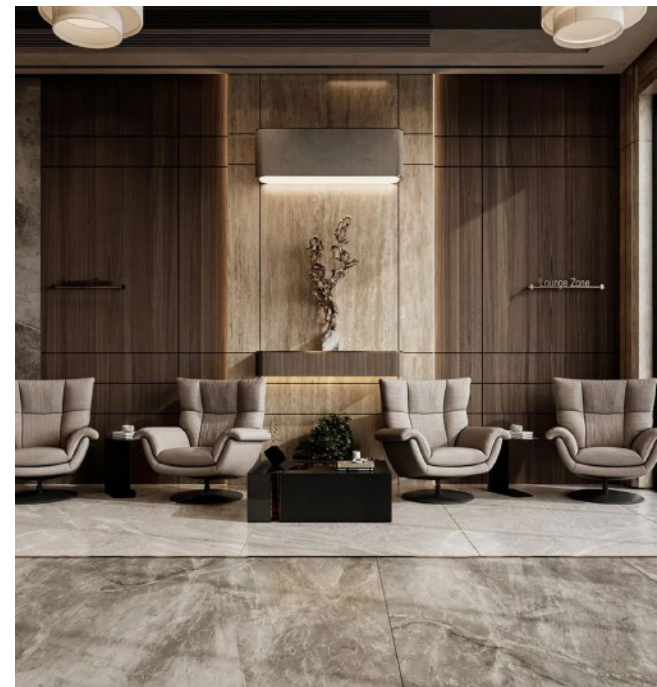
The reception section represents modern elegance with its marble floor, lacquered panel details and specially produced counter.

The lighting is supported by linear LED systems, and the volume of the space is emphasized with the ceiling height..





This elegant lounge area combines comfort and contemporary design, offering its users a sophisticated welcoming experience. Enriched with natural material textures and artistic details, this space has been specially designed for hotel lobby areas, business centers and distinguished office entrances. A holistic warmth is achieved with large-format porcelain ceramic floors in gray tones, wood and natural stone textured wall panels.



Softly upholstered, modern, high-comfort swivel armchairs are ideal for long-term sessions.





The staircase, positioned within the interior circulation area of the project, has been designed independently from the structural system. The steps are mounted on a wall-anchored steel construction. High-strength, polished natural marble was used for the step cladding, and LED strip lighting integrated into the edges provides both guidance and visual coherence.

Instead of leaving the under-stair area as an inactive volume, it was transformed into a decorative indoor landscape design. The floor level was lowered to create a drained stone pool, which was planted with a controlled selection of natural stone objects, various cactus species, and tropical plants. Lighting details were integrated into the floor with recessed systems to highlight the landscape elements at night.

The glass balustrades are made of 10+10 laminated tempered glass and are fixed from the bottom with aluminum base profiles. Maximum transparency was targeted, and all connection elements were concealed with hidden profiles during installation to achieve a clean appearance.

The vertical surface claddings were executed using natural wood-textured composite panels. These panels were custom-manufactured to project-specific dimensions and applied on-site. The entire manufacturing and application process was carried out by our team in full compliance with the architectural project, structural details, and material specifications.





### Bedroom Design

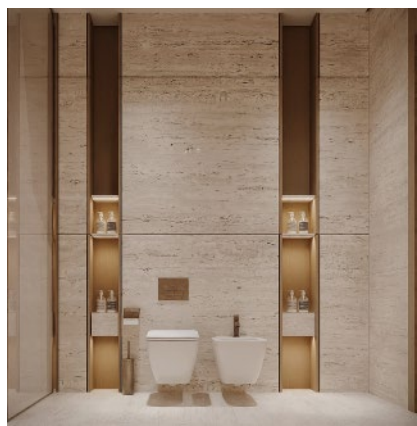
The bedroom designed within the scope of the project is designed with a simple and refined elegance. The bed headboard is applied in an integrated form along the wall and is created with special fabric-covered panels. The integrated LED lighting line placed on the horizontal axis along the headboard creates a warm ambiance on the back surface while strengthening the horizontal perception of the space.



### Minimalist and Functional

#### Wardrobe Design

This special wardrobe design, which is the meeting point of aesthetics and functionality in modern living spaces, brings together warmth and elegance with its natural wood texture. This modular structure, created with minimal lines, was planned to meet user needs.



### Elegant and Modern Bathroom Design

This special bathroom design offers a sophisticated atmosphere with its natural stone texture and integrated niche lighting. Thanks to the wall-mounted toilet and bidet unit, both hygiene and space saving are provided.



# New York Mandarin Oriental

Within the scope of the Mandarin Oriental project, one of the iconic hotels of New York, the reception section located in the reception area of the hotel was designed and implemented by us.

The main purpose of the project is to highlight the luxury identity of the hotel, blended with elegance and simplicity, with material quality and architectural details.

The reception desk is created by combining a bronze metal surface and a marble mass with preserved natural texture; a unique form has been designed in accordance with the theme of "raw nature + refined workmanship". A simple but strong welcoming effect has been created by using laser-cut RECEPTION text on the metal part.

Specially designed pendant lighting with acoustic performance integrated into the ceiling surface; while providing both aesthetic and functional solutions, it has provided a balanced light distribution in large volumes.

In the floor covering, microcement textured concrete surfaces were preferred in accordance with the architectural line of the hotel.







### Hotel Lobby Lounge Area / Relaxation Corner

This lobby area we designed offers its guests not only comfort but also a first impression of peace and aesthetics. Every detail came to life with our touch.



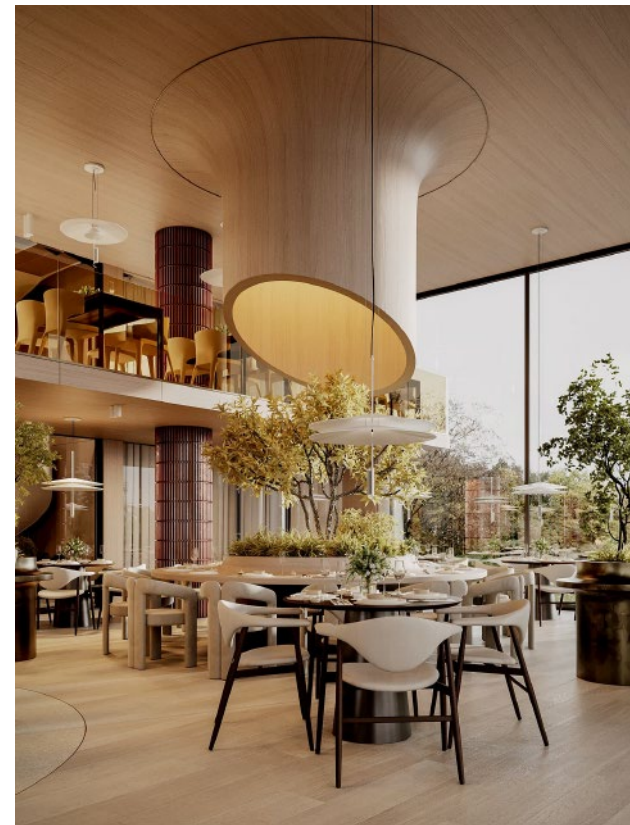


## Bar & Lounge Area

This bar area, designed in a contemporary line with a high welcoming effect, is designed to be positioned at the center of the space with its material language, detail solutions and lighting elements.

The bar counter is wrapped with custom-made brass-effect modular facade panels; embossed cylindrical surfaces placed within the metal carrier system create both depth and reflection effects. The seating height is determined according to ergonomic criteria; It is completed with specially produced bar chairs with foot support and thin metal legs.

The circular pendant shelf system defining the bar at the ceiling level is designed with glass goblet hangers and supported by LED lighting. The shelf system works as both a decorative and functional element.







## Special Event Area

This area, which combines the serenity of nature with contemporary design aesthetics, is a special place designed for special events and privileged meetings. The natural plant composition and round table form placed in the center of the space create both a visual focal point and a warm and friendly interaction environment between users.

This layout, planned so that participants can sit together, at equal distances and face to face, emphasizes communication and sharing. This feature offers an ideal environment especially for organizations such as special dinners, VIP events, gourmet tasting nights and boutique meetings.





## Fireplace Rest Area

This special relaxation area, designed in accordance with the architectural spirit of the hotel and its harmony with its natural surroundings, was implemented to ensure that guests spend time in a warm and comfortable atmosphere at all hours of the day.

Before starting the area design, the general interior architectural language of the hotel was analyzed and it was decided to create an elegant but striking central element that connects with nature. As a result, the visual fireplace in the center was positioned as both a decorative and functional source of warmth..





The image shows a serene and modern living space. A light-colored, modular sofa with large, rounded cushions is positioned against a wall with vertical blinds. In front of the sofa is a low, oval-shaped wooden coffee table. On the table, there is a small black tray with a dark red bottle and two glasses, and a white geometric sculpture. To the left of the sofa, there are two large potted plants with dense green foliage. The floor is covered with a light-colored, textured rug. The overall atmosphere is calm and elegant.

## Private Suite Sitting Area Where Calm and Elegance Meet

We designed a seating area where our guests will feel at home and will meet their needs for rest and relaxation. Shaped with modern lines, this special corner offers both a functional and peaceful experience in the suite room.



## Bedroom

This special bedroom design represents not only comfort but also serenity and refined taste.

In this project, where every touch belongs to us, the softly shaped bed and bench were balanced with natural textures. Every detail, from the specially woven carpet on the floor to the bedside decorations, was carefully designed.

The elegant lighting lines integrated with the wall panel and the soft transitions that add depth to the space transformed this room not only into a living space but also into an interior architecture experience.

In our opinion, a bedroom is not just a place to spend the night; it is a shelter that soothes the soul. And in this project, we built that shelter together.







It offers an atmosphere where elegance, comfort and architectural signature are intertwined.

The specially designed TV unit positioned in the center meets natural stone surfaces to create a sophisticated focal point, while its geometric architecture raised from the ground adds a unique dynamism to the space.

# Antalya

## REGNUM HOTEL

This special room, which we designed for Regnum Hotel, one of the prestigious hotels in Antalya, was shaped with the aim of bringing together contemporary lines and luxurious comfort to take the guest experience to the highest level. During the design process, maximum use of natural light, creating a visual continuity between the interior and exterior, and integrating warm material textures with modern forms were at the forefront.

On the headboard wall, which is the focal point of the room, we created a depth and sophisticated atmosphere by using specially produced three-dimensional panels in earthy tones. The velvet fabric-covered bed selected in gray tones and the footboard bench with cylindrical lines provide both visual richness and functional use. The design was given an aesthetic rhythm with the elegant pendant lighting and sculptural accessory details at the headboard.

Thanks to the wide sliding glass doors that open directly to the pool, natural light surrounds the entire room; thus, a soft transition is provided between the interior and exterior. The double seating corner placed in front of the window offers a warm atmosphere for morning coffee or







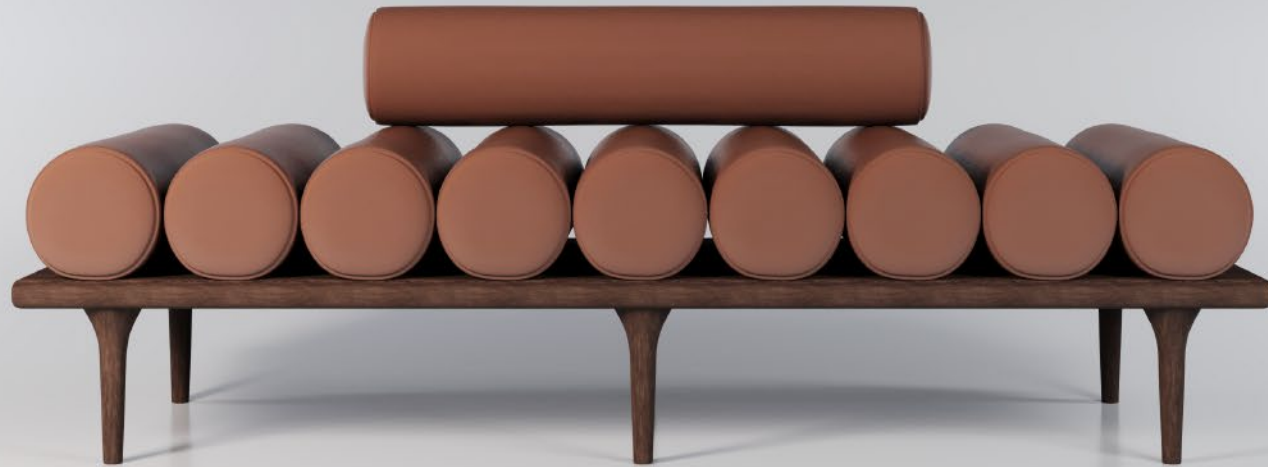
The overall spatial atmosphere is softened with natural wooden floors, light-toned wall coverings and hidden LED lighting on the ceiling, creating a relaxing and peaceful interior world. With attention to detail, harmony of light and materials and balanced planning in the use of space, this room is designed to offer an accommodation experience beyond the expectations of Regnum Carya guests.





## Modern Bench Design with Cylindrical Form

This special bench design, one of the signature pieces of our collection, brings character to seating areas by combining simple lines with sculptural forms. While a visual rhythm is created with horizontally arranged cylindrical cushion modules in the design, both ergonomics and aesthetic balance are achieved with the vertical cylindrical cushion on top. Designed to respond to different seating habits, this structure has an approach that modernizes the classic bench concept.







# Suite Living Area Design

This special suite seating area that we designed for Antalya Regnum Carya Hotel was designed as a living space where warm materials meet the timeless form language, offering both a relaxing and stylish atmosphere. The natural wood coatings in light walnut tones used in the space add a sense of naturalness to the interior, while the selected neutral tones of textile surfaces make the environment bright and spacious.

The modern-lined modular armchairs used in the seating group provide maximum comfort and offer a layout that integrates with the geometric order of the space. The use of contrasting materials in the double coffee table design in the middle draws attention; the coffee table with a body in shiny brass tones reinforces the perception of luxury with the natural patterned marble table placed on it, while the simpler auxiliary coffee table form is designed as a balancing complement.





The recessed spotlights and hidden LED lines preferred in the lighting system support the interior atmosphere by providing a homogeneous and soft light distribution.

Our goal in this design was to offer Regnum Carya guests not only a comfortable but also an aesthetically rich, personalized and high-level living experience. This living space, which we created by combining the warmth of natural materials with modern lines, aims to make the stay enjoyable and unforgettable.





The use of space is rational and the atmosphere is peaceful.

Every square meter reflects the perfect harmony of comfort and design.

Another hotel experience brought to life with our touch...





**CVK**  
Furniture

**CVK**  
PROJECT

[www.cvkfurniture.com](http://www.cvkfurniture.com)

## SHOWROOM

Modoko 2.Cad 2.Sok.No:166-167-175 Ümraniye-İstanbul /Türkiye

## FACTORY

Şerifali Mah. Türker Cad. No: 55 Ümraniye -İstanbul - Türkiye

**Tel:** +90 216 550 09 18 (Pbx)

**GSM:** +90 532 289 29 29